

# AKIRA

makes life better

---

## Air Conditioner Service Manual



Большая библиотека технической документации

<https://splitsystema48.ru/instrukcii-po-ekspluatacii-kondicionerov.html>

каталоги, инструкции, сервисные мануалы, схемы.

# **MODEL: AC-W10CGP**

---






## CONTENTS

TECHNICAL SPECIFICATION.....	4
TROUBLE SHOOTING GUIDE.....	5
EXPLODED VIEW.....	6
PART LIST.....	7
CIRCUIT DIAGRAM.....	8

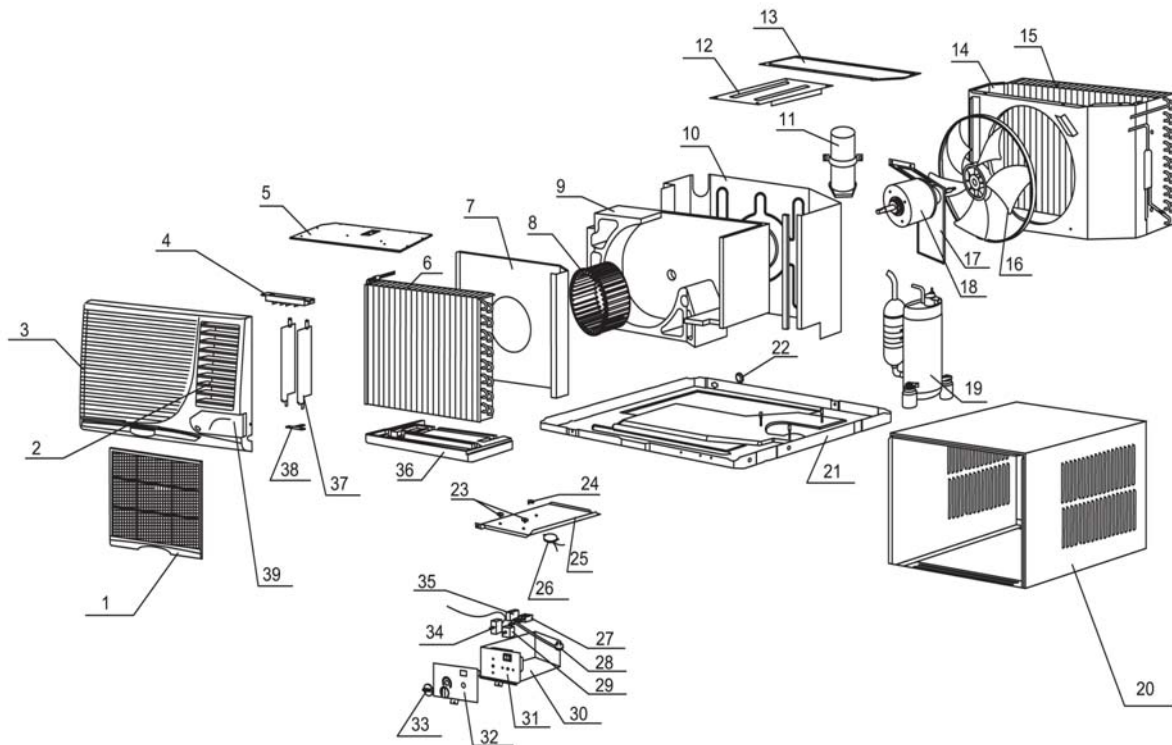
## TECHNICAL SPECIFICATION

<b>Rated Voltage</b>	<b>230V~</b>
<b>Rated Frequency</b>	<b>60Hz</b>
<b>Rated Input</b>	<b>950W</b>
<b>Rated Current</b>	<b>3.2A</b>
<b>LRA</b>	<b>26A</b>
<b>Cooling Capacity</b>	<b>9200kJ/h</b>
<b>EER</b>	<b>9.7kJ/W-h</b>
<b>RefrigerANT</b>	<b>R22 0.8kg</b>
<b>Sound Pressure Level (Indoor/Outdoor)</b>	<b>51/57dB(A)</b>
<b>Air Flow Volume</b>	<b>400m<sup>3</sup>/h</b>
<b>Max. Discharge Pressure</b>	<b>2.5MPa</b>
<b>Max. Suction Pressure</b>	<b>0.6MPa</b>
<b>Isolation</b>	<b>I</b>
<b>Protect Spatter Class</b>	<b>IPX4</b>
<b>Weight</b>	<b>45kg</b>

## TROUBLE SHOOTING GUIDE

Fault phenomenon	Trouble-shooting
<p>Air conditioner does not operate at all.</p> 	<ul style="list-style-type: none"> <li>* Is power fail?</li> <li>* Is plug out?</li> <li>* Is power fuse or switch off?</li> <li>* Is voltage higher than 253V or lower than 198V?</li> <li>* Is SET TIME suitable?</li> </ul>
<p>Cool efficiency is not good.</p> 	<ul style="list-style-type: none"> <li>* Is air inlet or outlet locking?</li> <li>* Is there any other heat source in room?</li> <li>* Are air filters dirty very much?</li> <li>* Is indoor fan speed set at LOW?</li> <li>* Is SET TEMP. suitable?</li> </ul>
<p>Wireless remote controller is not available.</p> 	<ul style="list-style-type: none"> <li>* If disturbed abnormally or operation modes changed too frequently, sometimes the electric controller would lose function. Please plug out and plug in again, it maybe OK.</li> <li>* Check batteries of wireless remote controller, if voltage is little, change batteries.</li> </ul>
<p>Foggy air flows out.</p> 	<ul style="list-style-type: none"> <li>* At COOL or DRY mode operation, sometimes there is foggy air flowing out of indoor unit, this is because that room humid air has been cooling rapid.</li> </ul>
<p>The air conditioner operation is noisy.</p> 	<ul style="list-style-type: none"> <li>* For a noise that sounds like water flowing: This is the sound of freon flowing inside the air conditioner unit.</li> <li>* For a noise that sounds like a shower: This is the sound of the dehumidifying water being processed inside the air conditioner unit.</li> </ul>
<p>It seems that condensation is leaking from air conditioner.</p>	<ul style="list-style-type: none"> <li>* Condensation occurs when the airflow from the air conditioner cools the warm room air.</li> </ul>
<p>Air conditioner does not operate for about 3 minutes when restart.</p>	<ul style="list-style-type: none"> <li>* This is to protect the mechanism.</li> <li>* Wait about three minutes and operation will begin.</li> </ul>
<p>Remote control display is faint, or no display at all.</p>	<ul style="list-style-type: none"> <li>* Are the batteries depleted?</li> <li>* Are the batteries inserted in the opposite(+) and (-) directions?</li> </ul>

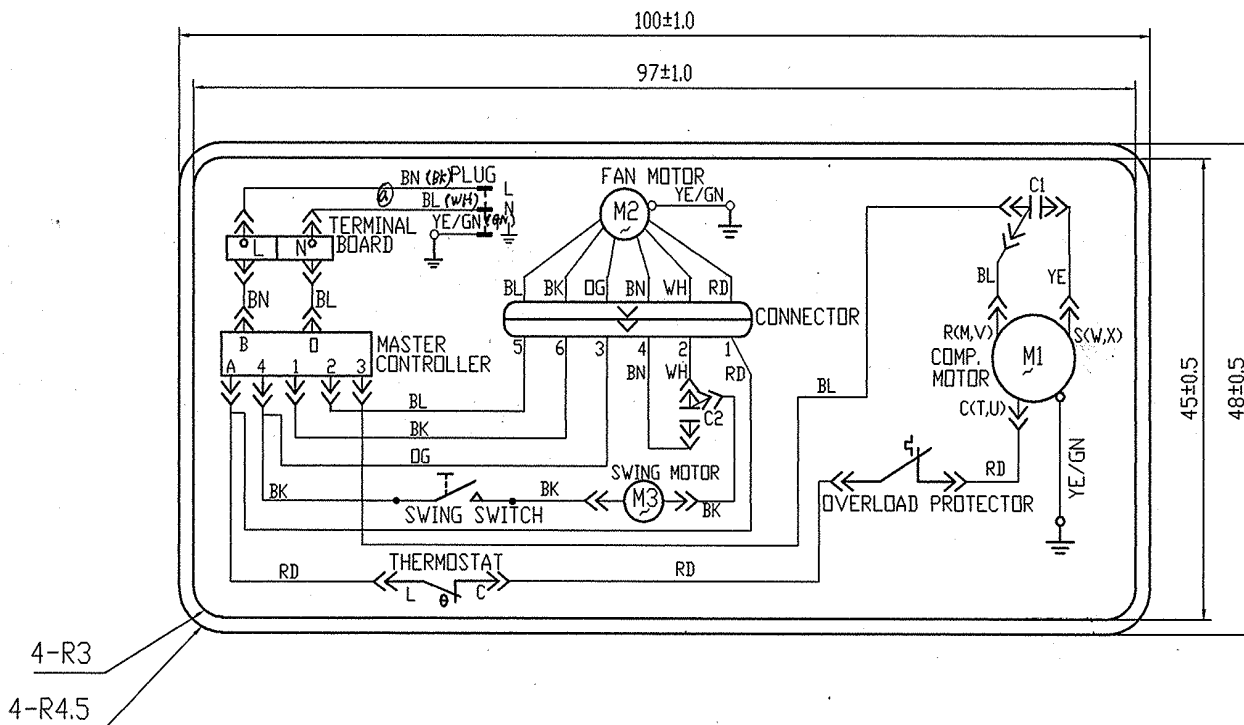
## EXPLODED VIEW



## PART LIST

No.	Part No	Part No	Qty
1	Filter	11121324	1
2	Horizontal air guider	10511324	12
3	Front panel	20001323	1
4	Cross beam	24241145	1
5	Top plate Ass'y of evaporator	01071300	1
6	Evaporator Ass'y	01031341	1
7	Insulation plate of housing	01231328	1
8	Centrifugal fan	10101343	1
9	Propeller housing	12101020	1
10	Front insulation plate	01231331	1
11	Top connection plate	01381322	1
12	Top plate Ass'y of condenser	01171342	1
13	Rear insulation plate	01231147	1
14	Condenser Ass'y	01101341	1
15	Axial flow fan	10101347	1
16	Motor support	01701135	1
17	Motor CJ60A	15011024	1
18	Compressor 2P14S236A1G	00100252	1
19	Cabinet	01431149	1
20	Chassis assembly	01211333	1
21	Drainage hole cap	76711012	1
22	Plug	26151135	1
23	Slide block	10541135	1
24	Air hole plate	01221326	1
25	Swing motor SM002	15210202	1
26	Terminal board	42011106	1
27	Power cord	40020306	1
28	Main switch RS8902C	45010305	1
29	Electric box	20101323	1
30	Plate of PCB	20161212	1
31	Switch	45030002	1
32	Thermostat	45040003	1
33	Fan capacitor CBB61 3uF/450V (UL/VDE/TUV)	33010027	1
34	Drain pan	12411004	1
35	Air guider	10511135	2
36	Connecting lever	10581324	1
37	Cover switch	20161327	1
38	Filter	11121324	1
39	Horizontal air guider	10511324	12

## CIRCUIT DIAGRAM







# АКТРА

Большая библиотека технической документации

<https://splitsystema48.ru/instrukcii-po-ekspluatacii-kondicionerov.html>

каталоги, инструкции, сервисные мануалы, схемы.